

Tobii Pro Eye Tracker Manager

User's Manual



Version 1.11
11/2018
All rights reserved.
Copyright © Tobii AB (publ)

The information contained in this document is proprietary to Tobii AB. Any reproduction in part or whole without prior written authorization by Tobii AB is prohibited. Products that are referred to in this document may be either trademarks and/or registered trademarks of the respective owners. The publisher and the author make no claim to these trademarks. While every precaution has been taken in the preparation of this document, the publisher and the author assume no responsibility for errors or omissions, or for damages resulting from the use of information contained in this document or from the use of programs and source code that may accompany it. In no event shall the publisher and the author be liable for any loss of profit or any other commercial damage caused or alleged to have been caused directly or indirectly by this document.

Content subject to change without notice.

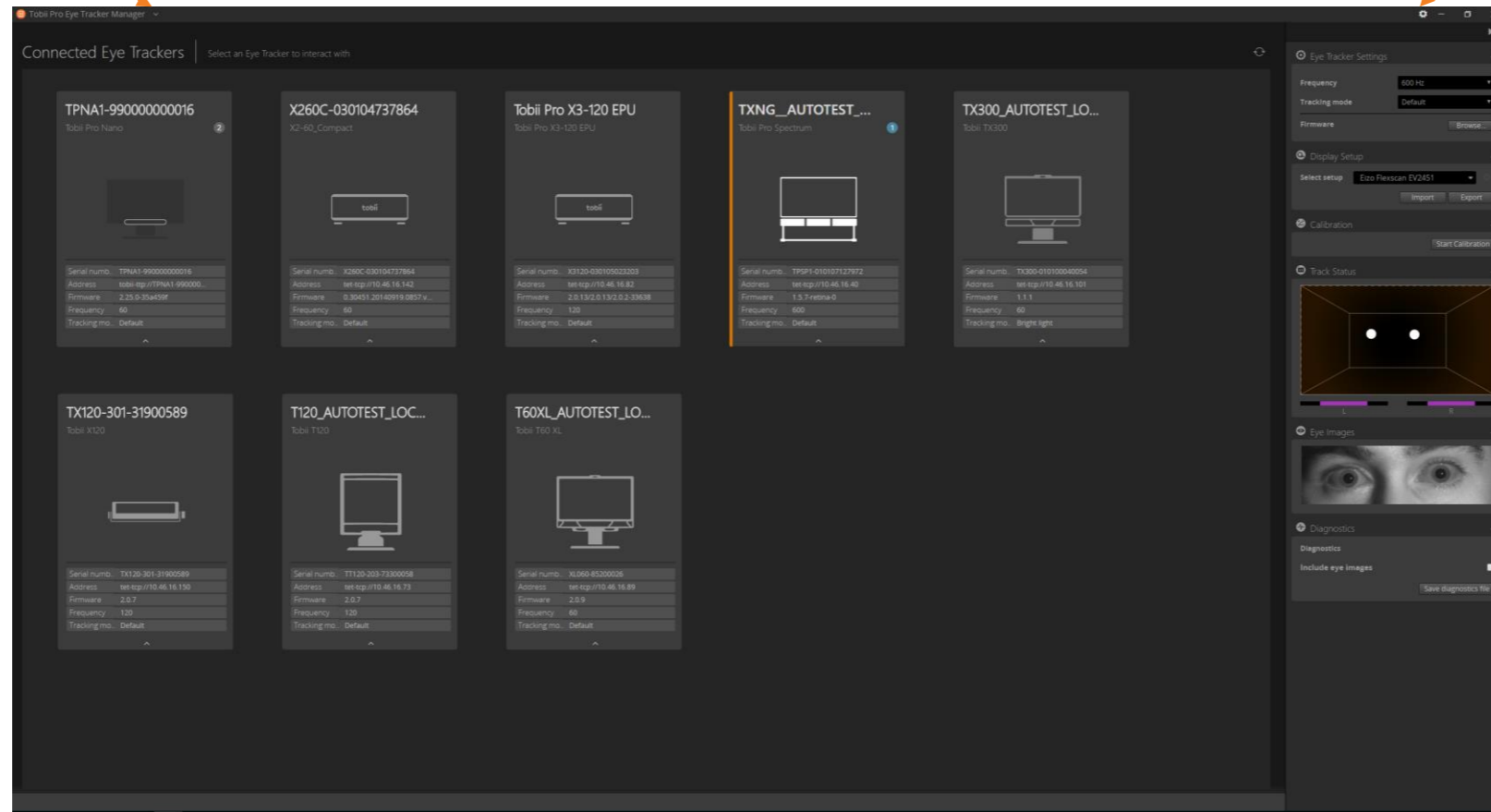
Please check the web site www.tobii.com for updated versions of this document.

tobiipro

The Eye Tracker Manager is a free configuration and setting utility for Tobii Pro Eye Trackers.

Application Menu
You can find information about the application, such as the current version number and its name.

Connected Eye Trackers
The list of connected Eye Trackers is displayed here, the currently-selected Eye Tracker is highlighted. Disconnected Eye Trackers are grayed out.



Selected Eye Tracker Panel
You can change settings for the selected eye tracker. Hide or show this panel with the arrow icons (▶▶ or ◀◀).

Application Settings
You can change language and notification settings here.

Eye Tracker Settings
You can change your Eye Tracker's setting such as frequency and tracking mode here. Some of these features are available for specific Eye Trackers only.

Display Setup
You can configure the Eye Tracker with a screen or a physical scene here by creating a new display setup or using an existing one.

Calibration
You can calibrate the Eye Tracker for the user's eyes by clicking start calibration and following the instructions.

Position Guide
The user can find the best position to sit in front of the eye tracker using the Position Guide. Move your head to align with the reference circle for optimal tracking position.

Eye Images
The live view of eye images is shown here. This feature is available only for Tobii Pro Spectrum.

Diagnostics
You can download diagnostic file for support issues here. This feature is available for specific Eye Trackers only.

System Requirements

| Operating System | Windows 64 bit & 32 bit | Linux 64 bit | Mac OS X |
|------------------|----------------------------|-----------------------|---------------------------------------|
| Versions | 7, 8.1 and 10 | Ubuntu 16.04 | 10.11.6 (El Capitan) & 10.12 (Sierra) |
| CPU | Intel Quad Core i5 3.0 GHz | Intel Celeron 700 MHz | Intel Quad Core i5 3.0 GHz |
| Memory | 2 GB RAM | 512 MiB RAM | 8 GB 1600 MHz DRAM |

Supported Eye Trackers

| | Firmware Update | Eye Tracking Mode | Eye Tracking Frequency | Position Guide | Display Setup | Calibration | Diagnostics | Eye Images |
|--------------------|-----------------|-------------------|------------------------|----------------|---------------|-------------|-------------|------------|
| Tobii Pro Spectrum | • | • | • | • | • | • | • | • |
| Tobii Pro TX300 | | • | • | • | • | • | • | |
| Tobii Pro T60XL | | | | • | | • | • | |
| Tobii X60 | | • | | • | • | • | • | |
| Tobii X120 | | • | • | • | • | • | • | |
| Tobii T120 | | • | • | • | | • | • | |
| Tobii Pro Nano | | | | • | • | • | | |
| Tobii Pro X3-120 | | | | • | • | • | • | |
| Tobii Pro X2-60 | | | | • | • | • | • | |
| Tobii Pro X2-30 | | | | • | • | • | • | |