


## Safety and Compliance


### Tobii Pro X3-120

#### 1 Safety


##### 1.1 Mounting Warning

 The Tobii Pro X3-120 should be mounted according to MANUFACTURER instructions of approved mounts. Tobii AB or its agents are not liable for damage or injuries to a person or their properties due to a Tobii Pro X3-120 falling from a mounted configuration. The mounting of a Tobii Pro X3-120 is done entirely at the user's own risk. The double sided tape supplied with the adhesive Magnetic Mounting Plates is designed to permanently attach the bracket to the monitor/laptop. Attempting to remove the bracket after attaching it using the supplied tape can result in damage both to the monitor/laptop and the bracket. Do not lick the tape or place any part of the tape or Magnetic Mounting Plate in one's mouth. Do not mount the Tobii Pro X3-120 on monitors positioned above the head or face of a user unless using a dedicated "fixed mounting" solution.

##### 1.2 Epilepsy Warning


 Some people with Photosensitive Epilepsy are susceptible to epileptic seizures or loss of consciousness when exposed to certain flashing lights or light patterns in everyday life. This may happen even if the person has no medical history of epilepsy or has never had any epileptic seizures. A person with Photosensitive Epilepsy would also be likely to have problems with TV screens, some arcade games, and flickering fluorescent bulbs. Such people may have a seizure while watching certain images or patterns on a monitor, or even when exposed to the light sources of an eye tracker. It is estimated that about 3-5% of people with epilepsy have this type of Photosensitive Epilepsy. Many people with Photosensitive Epilepsy experience an "aura" or feel odd sensations before the seizure occurs. If you feel odd during use, move your eyes away from the eye tracker.

##### 1.3 Infrared Warning


 When activated, the Tobii Pro X3-120 emits pulsed infrared (IR) light. Certain medical devices are susceptible to disturbance by IR light and/or radiation. Do not use the

Tobii Pro X3-120 when in the vicinity of such susceptible medical devices as their accuracy or proper functionality could be inhibited.


##### 1.4 Magnetic Field Warning

 The Tobii Pro X3-120 Magnetic Mounting contains magnets. Magnetic fields may interfere with the function of cardiac pacemakers and implantable cardioverter-defibrillators. As a general rule, maintain a minimum distance of 6 inches (15 centimeters) between any item with magnets and your heart device.


##### 1.5 Child Safety

 The Tobii Pro X3-120 is an advanced computer system and electronic device. As such it is composed of numerous separate, assembled parts. In the hands of a child certain parts have the possibility of being separated from the device, possibly constituting a choking hazard or other danger to the child. Young children should not have access to, or the use of, the device without parental or guardian supervision.

##### 1.6 Do not Open the Tobii Pro X3-120


 Non-compliance will result in loss of Warranty! There are no user serviceable components inside. Contact Tobii Pro Support if your Tobii Pro X3-120 is not working properly.

#### 2 Compliance Information

 All Tobii Pro X3-120 are CE-marked, indicating compliance with the essential health and safety requirements set out in European Directives.

##### 2.1 FCC Statement

This device complies with Part 15 of the FCC Rules. Operation is subject to the following two conditions: (1) this device may not cause harmful interference, and (2) this device must accept any interference received, including interference that may cause undesired operation.

 Modifications not expressly approved by Tobii AB could void the user's authority to operate the equipment under FCC rules.

This equipment has been tested and found to comply with the limits for a Class B digital device, pursuant to part 15

of the FCC Rules. These limits are designed to provide reasonable protection against harmful interference in a residential installation. This equipment generates, uses and can radiate radio frequency energy and, if not installed and used in accordance with the instructions, may cause harmful interference to radio communications. However, there is no guarantee that interference will not occur in a particular installation. If this equipment does cause harmful interference to radio or television reception, which can be determined by turning the equipment off and on, the user is encouraged to try to correct the interference by one or more of the following measures:

- Reorient or relocate the receiving antenna.
- Increase the separation between the equipment and receiver.
- Connect the equipment into a wall outlet on a circuit different from that to which the receiver is connected.
- Consult the dealer or experienced radio/TV technician for assistance.

##### 2.2 Industry Canada Statement

This Class B digital apparatus complies with Canadian ICES-003.  
Cet appareil numérique de la classe B est conforme à la norme NMB-003 du Canada.

##### 2.3 CE Statement

The Tobii Pro X3-120 complies with the following Directives:

- 2011/65/EU (RoHS 2) - Restriction of Hazardous Substances Directive
- 2004/108/EC (EMC) - Electromagnetic Compatibility Directive

##### 2.4 Standards

The Tobii Pro X3-120 complies with the following standards:

- IEC/EN 62471:2008, Photo Biological Safety of Lamps and Lamp Systems
- EMC Emission: EN 61000-6-3:2007, Generic Emission standard for residential, commercial and light industry environments
- EMC Immunity: EN 61000-6-1:2007, Generic

Emission standard for residential, commercial and light industry environments

- EN 55024:1998+A1+A2, Information technology equipment. Immunity characteristics. Limits and methods of measurement
- IEC 60950-1:2005, Safety of information technology equipment
- FCC part 15, Class B

#### 3 Customer Support

All customer support is handled online at:  
<http://www.tobii.com/analysisupport>

#### 4 Disposing of the Tobii Pro X3-120

Do not dispose of the Tobii Pro X3-120 in general household or office waste. Follow your local regulations for the disposal of electrical and electronic equipment.

#### Safety compliance in other languages

Tobii Pro X3-120 safety and compliance information is available online in more languages.

Sicherheit und Zertifizierungen

Sikkerhed og Standarder

Sikkerhet og samsvar

Säkerhet och överensstämmelse

Seguridad y Conformidad

Turvallisuus-ja vaatimustenmukaisuusasiakirjat

Sécurité et conformité

Sicurezza e conformità

Veiligheid en conformiteit

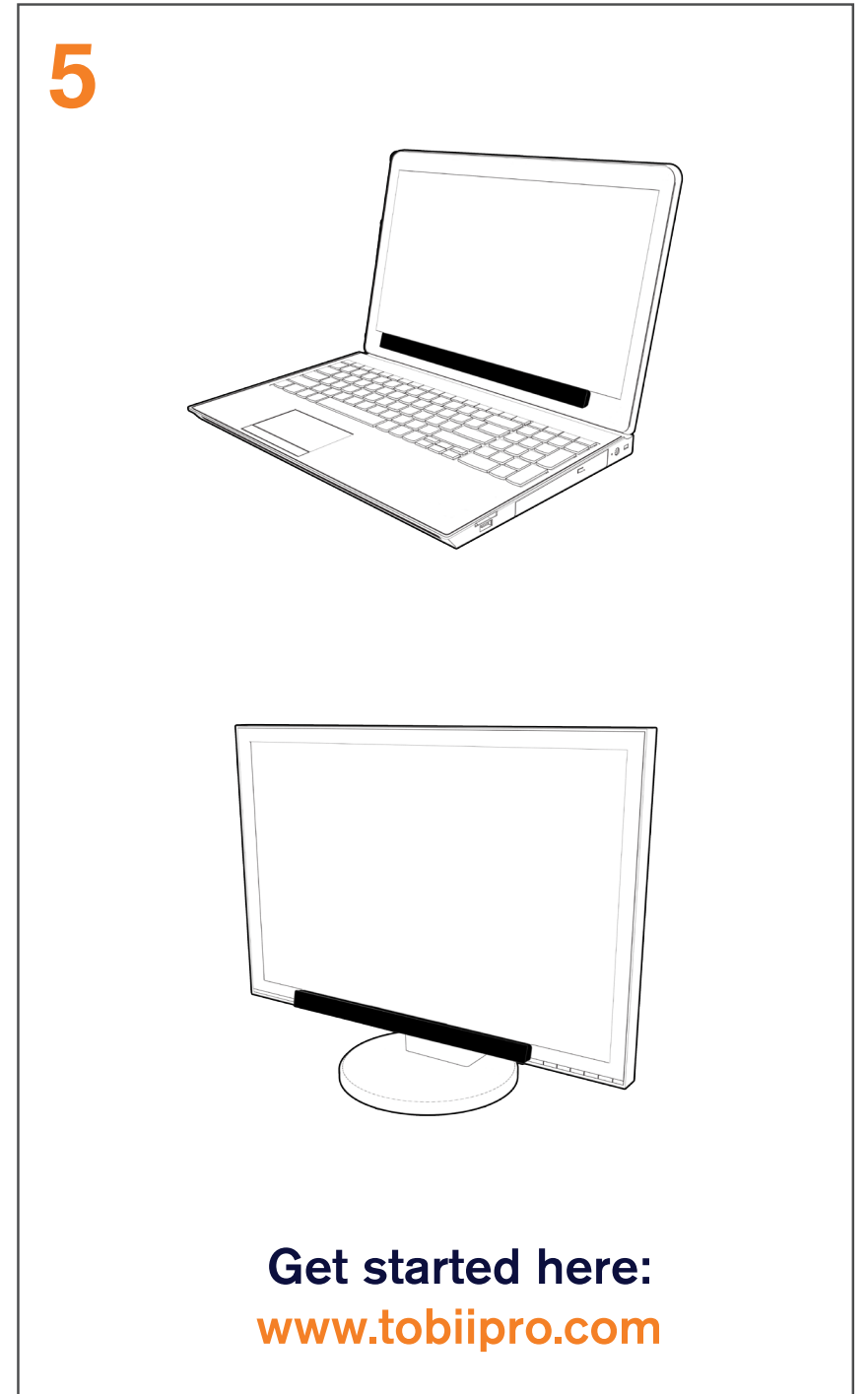
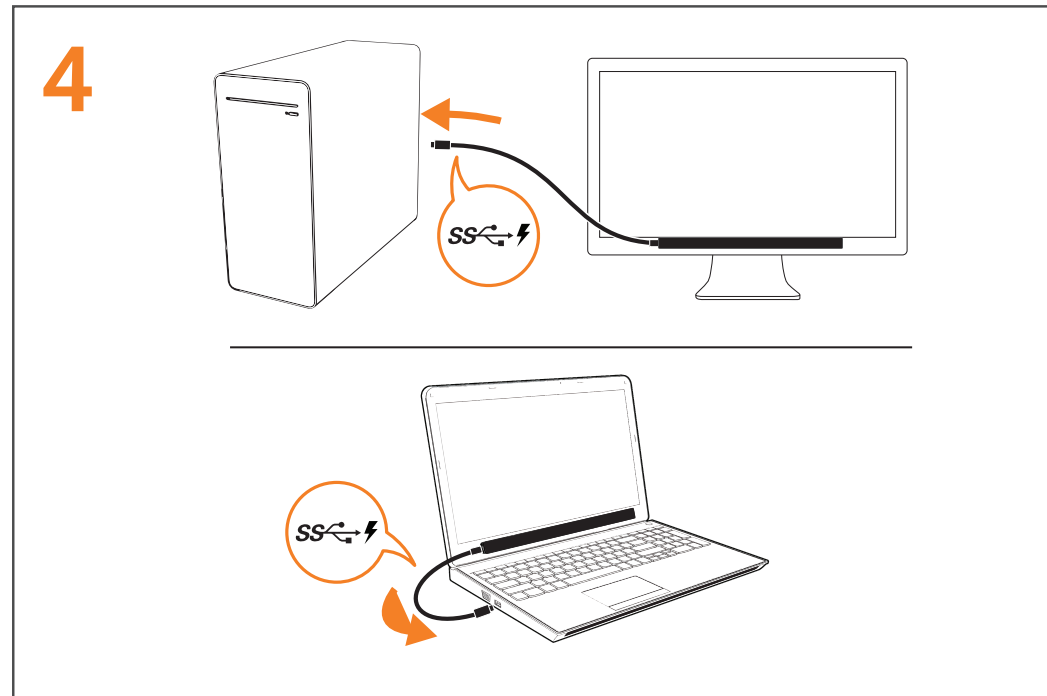
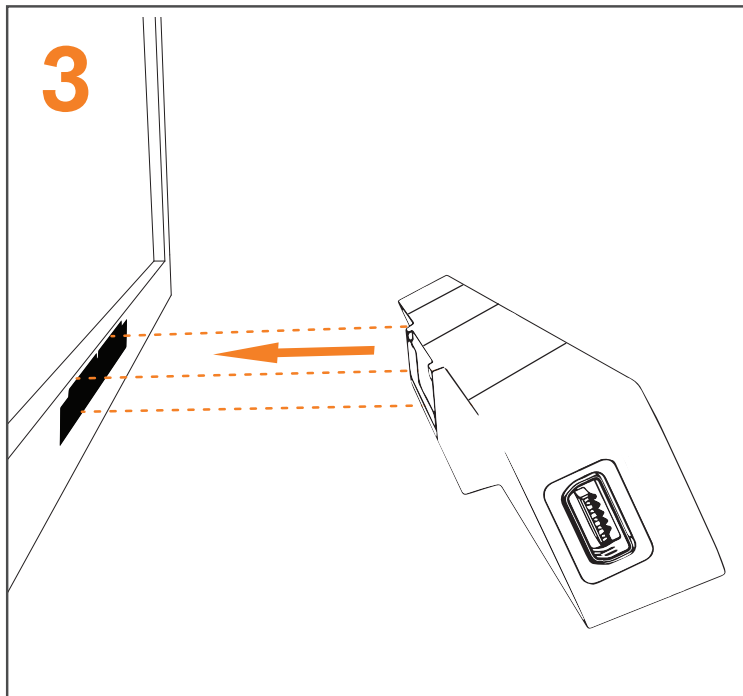
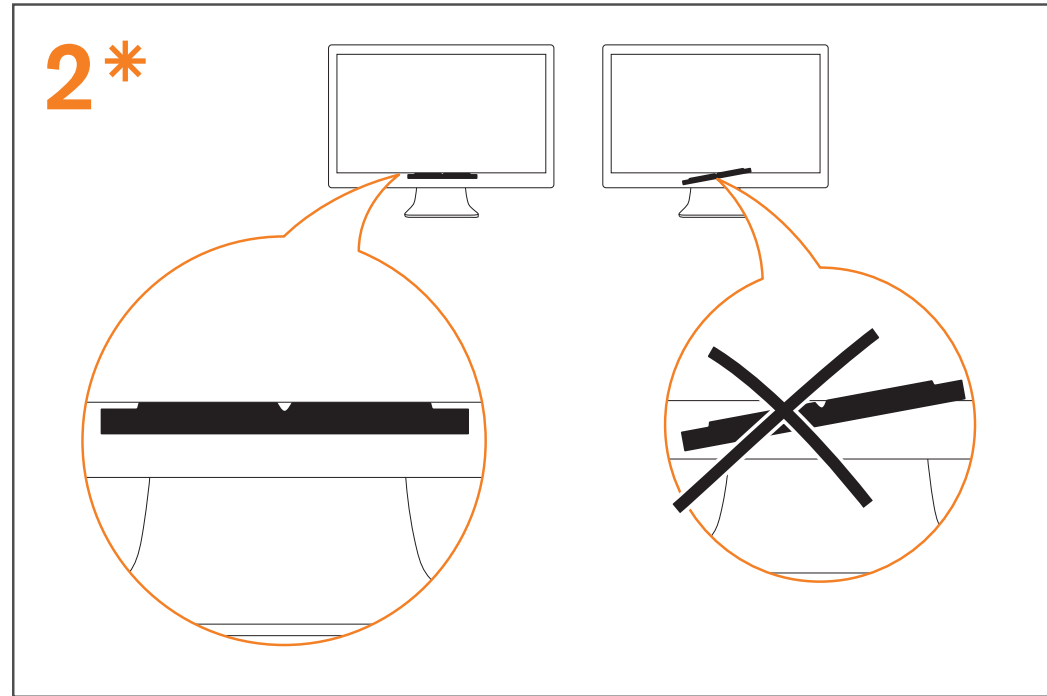
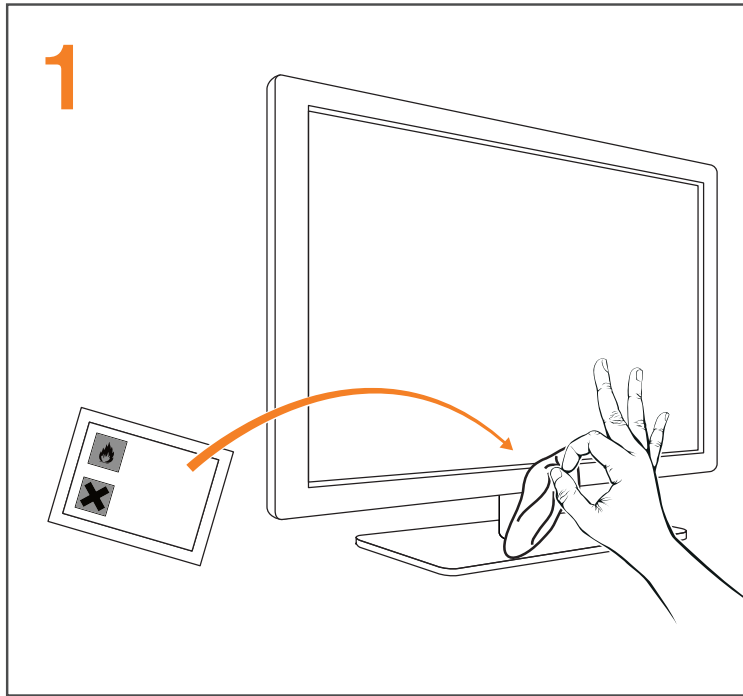
Segurança e conformidade

セーフティおよびコンプライアンス関連文書

安全与合规文件

pro/x3-120

## Installation Guide



Get started here:  
[www.tobiipro.com](http://www.tobiipro.com)

\* This is the X3-120 only Mounting Bracket, if an X2-30/60 and X3-120 will be used on the same screen, please see the Mounting Bracket Adapter X2-30/60 to X3-120 Installation Guide before proceeding .